



భారతీయ సాంకేతిక విజ్ఞాన సంస్థ హైదరాబాద్  
भारतीय प्रौद्योगिकी संस्थान हैदराबाद  
Indian Institute of Technology Hyderabad

## DEPARTMENT OF LIBERAL ARTS



2024



## MESSAGE FROM HEAD OF THE DEPARTMENT

It is my pleasure to welcome you to the Department of Liberal Arts at IIT Hyderabad! We offer a vibrant and diverse academic culture which is both cultivated and advanced by our team of exceptional and devoted faculty members. Drawing upon the classical model of education through intellectual inquiry and interweaving it with the progressive ideologies of a globalized and technologized world, our department houses various branches of the Humanities and the Social Sciences, while also offering several programs in the Creative and Performing Arts. Our mission is to excel in teaching and research not only in the core areas of the Humanities and the Social Sciences but also to harness the enormous possibilities that reside in interdisciplinary research in alliance with scientific and technical disciplines. We also aspire to facilitate collaborations and partnerships with reputed national and global academic organizations as well as individuals. In all, the Department of Liberal Arts at IIT Hyderabad seeks to foster a knowledge economy that contributes to scholarly growth, policy level transformations and, ultimately, to societal development.



## ABOUT THE DEPARTMENT



The Department of Liberal Arts is a vibrant space for the interdisciplinary exchange of ideas in the humanities and social sciences. The department is deeply committed to teaching innovative and intellectually stimulating courses to undergraduate and postgraduate students as well as world-class research in cutting-edge areas. In addition, the department places a lot of importance on interdisciplinary collaborations through projects of national and international importance.

Unique in its constitution and vision, the Department of Liberal Arts strives to pursue excellence in teaching and research to benefit students, academics, and the society. The department aspires to enrich the academic and creative life of the institute and cultivate a deeper understanding of humanity at large.



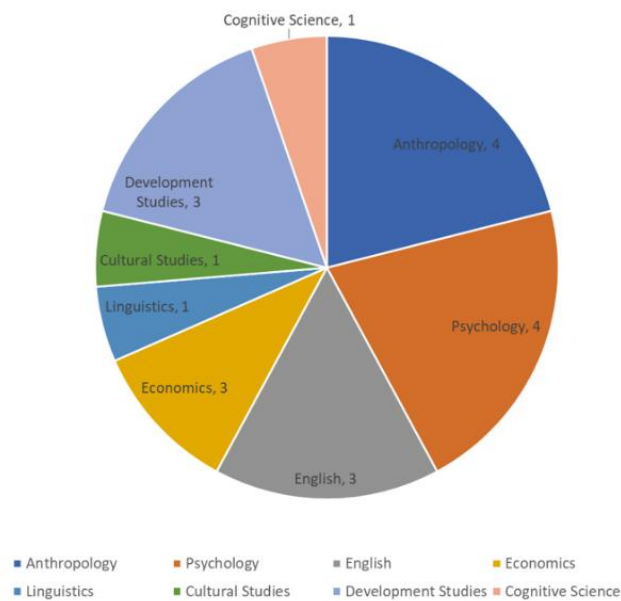
## HIGHLIGHTS OF THE DEPARTMENT

- 20 Full-time faculty
- 6 Adjunct faculty
- 1 Distinguished faculty
- 7-8 Disciplines
- 80 PhD students
- 31 MA students
- 1 post-doctoral student

### Master's programs

- MA in Development Studies
- MA in Health, Gender and Society
- Minor in Creative Arts
- Minor in Economics

Faculty strength: 20





## DISCIPLINES

As a multidisciplinary department, we have faculty from a diverse yet connected world of disciplines of

- Anthropology-Sociology
- Cognitive Science
- Cultural Studies
- Development Studies
- Economics
- English Literature
- Linguistics
- Psychology



## ANTHROPOLOGY-SOCIOLOGY

The thrust of our pedagogical practice focuses on ethnographic research and theoretical frameworks emerging from the global South. Courses offered by the faculty include Media and Development, Medical Anthropology, Anthropology of Reproduction, Contemporary India and Environment and Society.

Research areas includes popular culture, heritage, infertility, reproductive health, sexuality, technology studies and climate change.

## COGNITIVE SCIENCE

Cognitive Science at LA encompasses a multidisciplinary research ecosystem that involves incorporating techniques from diverse fields such as Psychology, Neuroscience, Computational Biology, and engineering. Our overarching goal is to establish cutting-edge research infrastructure capable of comprehensively understanding cognitive functions and fostering the development of theoretical models and transnational protocols. Research areas include sensorimotor learning, memory, emotion, and psycholinguistics.

## CULTURAL STUDIES

Cultural Studies critically examines questions related to culture and society while insisting on the fluidity and negotiability of these categories. Because Cultural Studies is essentially a hybrid discipline, students are also introduced to other related subjects like Philosophy, Anthropology. Literature (English and/or Vernacular), Gender Studies etc. Current research and teaching interests include eco philosophy, LGBT rights and Indian mythology, evolution of gender questions under colonial India, caste and law, and film studies.



## **DEVELOPMENT STUDIES**

Development Studies is a diverse and multidisciplinary space. Research interests of core faculty include migration and development, women, gender and development, village and longitudinal studies; sociology and social history of labour, inequality, caste, and public policy; applied micro econometrics in the fields of health, education, gender, and labour market outcomes.

## **ECONOMICS**

The discipline of economics has been at the forefront for creating an environment for both rigorous teaching and research particularly by emphasizing on application oriented and impactful research. Faculty and PhD researchers are engaged in a diverse range of issues related to economic growth, international economics, monetary economics, labour economics, development economics and industrial economics. The Minor Economics programme is a popular choice among undergraduates majoring in Engineering.

## **ENGLISH LITERATURE**

Research interests include contemporary and multi-ethnic American fiction, American women's writing, literary theory, gender and body studies, twentieth and twenty-first century poetry and poetics, literature and the visual arts, literature and philosophy, the gift in literature, manuscript studies, digital humanities, post secular theory, nineteenth-century literature and culture, queer studies, postcolonial studies, thing theory, diaspora studies, graphic novels, and popular literature.

## **LINGUISTICS**

Linguistics has been innovating on research in the frontier areas of theoretical and experimental linguistics spanning studies on syntax, semantics, phonology/phonetics, language acquisition, computational linguistics, and psycholinguistics. We explore natural language from formal/mathematical, biological, computational and psychological perspectives that lead invariably to interdisciplinary inquiries addressing fields as varied as psychology, neuroscience, philosophy, anthropology, computer science, and cognitive science in general.

## **PSYCHOLOGY**

The diverse interests of Psychology at LA include: positive psychology with an emphasis on resilience; organizational behaviour and work psychology focusing on cross-cultural virtual teams; teacher leadership, helping behaviour, eco-friendly behaviours, and ethical decision-making in the workplace; critical and qualitative studies on mental health, culture, disability and gender; and chronic illness management with a focus on psycho-oncology, endocrinology, chronic kidney disease and women's health; cultural aspects of health behaviour change with a focus on diet, exercise and safe sex.





**Aalok Khandekar**

ASSISTANT PROFESSOR

---

Email: [aalok@la.iith.ac.in](mailto:aalok@la.iith.ac.in)

## RESEARCH INTERESTS

Science, Technology, and Society Studies; Urban Studies; Infrastructure Studies; Climate Change; Air Pollution; Heat; Experimental Ethnography; Digital Research Infrastructure and Collaboration; Open Science

## SELECTED RESEARCH PROJECTS

- Tackling Society's Grand Challenges: Approaches to Responsible Innovation in Science and Technology and the Indo-Pacific Region.[Funding agency:Ministry of Education, GOI, Fundng amount: INR75,000]
- Democratizing Delphi: Towards More Inclusive Methods for Assessing Technologies for Development[Funding agency:NWO-WOTRO, Netherlands.Funding amount: EURO 50,000]

## SELECTED PUBLICATIONS

- Aalok Khandekar, Jamie Cross, and Anant Maringanti. "Scale and Modularity in Thermal Governance: The Replication of India's Heat Action Plans." Special Issue on Heat in Urban Asia: Past, Present, and Future." Guest Edited by Gregory Clancey, Jiat-Hwee Chang, and Simon Marvin. (Forthcoming)
- Kim Fortun, Duygu Kaşdoğan, Aalok Khandekar, Angela Okune, and Maka Suarez. "Re-Mooring Academia: Postcolonial and Infrastructural Challenges." Decentralizing Knowledges: Essays on Distributed Agencies, edited by Leandro Rodriguez-Medina and Sandra Harding. Durham, NC: Duke University Press.
- Editorial Collective: Angela Okune, Grant Jun Otsuki, Tim Schütz, Clément Dréano, Noela Invernizzi, Duygu Kaşdoğan, Ali Kenner, Aalok Khandekar, Sujatha Raman, Federico Vasen, Amanda Windle, and Emily York. "Open Research Data: Experimenting towards a Publishing Infrastructure." Engaging Science, Technology, and Society 8(1): 1-13. <https://doi.org/10.17351/ests2022.1885>.
- Editorial Collective: Khandekar, Aalok, Noela Invernizzi, Duygu Kaşdoğan, Ali Kenner, Angela Okune, Grant Jun Otsuki, Sujatha Raman, Amanda Windle, and Emily York. "Building Community with ESTS." Engaging Science, Technology, and Society 8(1): 1-8. <https://doi.org/10.17351/ests2022.1671>.
- Editorial Collective: Khandekar, Aalok, Noela Invernizzi, Duygu Kaşdoğan, Ali Kenner, Angela Okune, Grant Jun Otsuki, Sujatha Raman, Amanda Windle, and Emily York. "Infrastructuring ESTS." Engaging Science, Technology, and Society 7(1): 1-11. <https://doi.org/10.17351/ests2021.1275>.





## Aardra Surendran

ASSISTANT PROFESSOR

Email: [aardra@la.iith.ac.in](mailto:aardra@la.iith.ac.in)

### RESEARCH INTERESTS

Labour, development, social inequality and gender, social history of labour

### SELECTED RESEARCH PROJECTS

- Labour Supply Chains in the Construction Industry: Circular Migrants, Contracting, and Covid. [Funding agency: Azim Premji University, Funding amount (in lakhs): 10.73]
- Labour Migration networks in the Construction Industry in Bengaluru [Funding agency: ICSSR, Funding amount (in lakhs): 6]

### SELECTED PUBLICATIONS

- Swenden, W., Sengupta, P., Sarvananthan, M., Surendran, A., & Ruwanpura, K. N. (2022). State Capacity, Ideology and the Management of COVID-19 in South Asia: India and Sri Lanka in Perspective. *Journal of South Asian Development*, 17(3), 409–415. <https://doi.org/10.1177/09731741221124279>
- Nayak, S and Surendran, A. (2021). "Caste Biases in School Textbooks: A Case Study from Odisha, India". *Journal of Curriculum Studies*, 2021. <https://doi.org/10.1080/00220272.2021.1947389>
- Surendran, A. (2020) "Women, Work and Development in Rural India: A Catalogue of Voluntarism in Policy". *Social Change*, 50(1) <https://doi.org/10.1177/0049085719901088>
- Surendran, A and Kumar, A. (2020). "Have RCTs brought back the "Empirical" into Economics?," *World Development*, Elsevier, Vol. 127(C). 2020, <https://ideas.repec.org/a/eee/wdevel/v127y2020ics0305750x19304772.html>
- Surendran, A. (2018) "Notes towards a Renewal of Industrial Sociology in India" in Chaudhuri, Maitrayee and Manish Jha (Eds.). *Doing Theory: Locations and Practices*. New Delhi: Orient Blackswan.



## Amrita Deb

ASSOCIATE PROFESSOR

---

Email: [amrita@la.iith.ac.in](mailto:amrita@la.iith.ac.in)

### RESEARCH INTERESTS

Positive psychology, clinical psychology focusing on mental health, resilience

### SELECTED RESEARCH PROJECTS

- Resilience and mental health among young urban adults who have overcome childhood adversities.  
[Funding agency: Indian Council of Medical Research, Funding amount(in lakhs):9.6]
- Resilience program for students in higher education in India.[Funding agency: Shastri Indo Canadian Institute, Shastri Programme Development Grant (SPDG), Funding amount(in lakhs):3]

### SELECTED PUBLICATIONS

- Hakkin, A. & Deb, A. (2022). Religious meaning-making and prosocial action among disaster response volunteers. *Mental Health, Religion and Culture*.  
<https://doi.org/10.1080/13674676.2022.2116634>
- Aswini, S. & Deb, A. (2022). Strength-based approach in Indian clinical practice: Reflections from a five-year ethnographic study. *Journal of Evidence-Based Social Work*,  
<https://doi.org/10.1080/26408066.2022.2091968>
- Soni, S. & Deb, A. (2022). From symptomology to resilience: Case illustrations of recovery from OCD using CBT. *Journal of Human Behavior in the Social Environment*,  
<https://doi.org/10.1080/10911359.2021.1983740>
- Khan, A. & Deb, A. (2021). Family as a source of risk and resilience among adults with a history of childhood adversity. *Children and Youth Services Review*, 121,  
<https://doi.org/10.1016/j.chidyouth.2020.105897>
- Ghosh, A. & Deb, A. (2016). Positive psychology progress in India: Accomplishments and pathways ahead. *Psychological Studies*, 61(3), 113-125. <https://doi.org/10.1007/s12646-016-0367-5>



**Amrita Datta**

ASSISTANT PROFESSOR

---

Email: [amritadatta@la.iith.ac.in](mailto:amritadatta@la.iith.ac.in)

## RESEARCH INTERESTS

Development Studies, Migration and Development, Labour, Gender, Villlage and Longitudinal Studies, Mixed Methods

## SELECTED RESEARCH PROJECTS

- Odisha Migration Study[Funding agency:International Rice Research Institute, Funding amount(in lakhs):160]
- Women and Work in India .[Funding agency:Indian Institute of Technology(IITH), Funding amount(in lakhs):8]

## SELECTED PUBLICATIONS

- Datta, A. (2022) Migration and Development in India: The Bihar Experience. Routledge.
- Datta, A., Endow, T., & Mehta, B. S. (2020). Education, caste and women's work in India. The Indian Journal of Labour Economics, 63, 387-406.
- Datta, A., & Satija, S. (2020). Women, development, caste, and violence in rural Bihar, India. Asian Journal of Women's Studies, 26(2), 223-244.
- Datta, A. (2018). Pride and shame in the city: Young people's experiences of rural-urban migration in India. Children's Geographies, 16(6), 654-665.
- Datta, A., Rodgers, G., Rodgers, J., & Singh, B. K. N. (2014). Contrasts in development in Bihar: A tale of two villages. The Journal of Development Studies, 50(9), 1197-1208.





## Anindita Majumdar

ASSOCIATE PROFESSOR

---

Email: [anindita@la.iith.ac.in](mailto:anindita@la.iith.ac.in)

### RESEARCH INTERESTS

I am an anthropologist by training. My research expertise is in the area of medical anthropology and kinship with a focus on reproduction. I have researched on infertility, assisted reproductive technologies and surrogacy since 2010.

### SELECTED RESEARCH PROJECTS

- A Preliminary Study of Ageing and Assisted Reproduction in India [Funding agency: Wellcome UK, Funding amount (in lakhs): 25]
- Post-Menopausal Reproduction: Ageing, Family and Assisted Reproduction in Contemporary India. [Funding agency: Indian Council of Social Science Research, Funding amount (in lakhs): 3]

### SELECTED PUBLICATIONS

- Thapar-Björkert, S., Majumdar, A., & Gondouin, J. (2023). "There are two sides to everything": Re (locating) vulnerability in the surrogacy industry in India. *Feminism & Psychology*, 0(0). <https://doi.org/10.1177/09593535231172592>.
- Majumdar, A. (2023). Infertility as inevitable: Chronic lifestyles, temporal inevitability and the making of abnormal bodies in India. *Anthropology and Medicine*, 30(2): 120-134. <https://doi.org/10.1080/13648470.2021.1874872>.
- Majumdar, A. (2022). Outliers and rogue doctors: Manufacturing 'anxiety' around older mothers in India. *Medical Anthropology*, 41 (6&7): 616-629. <https://doi.org/10.1080/01459740.2022.2099275>
- Majumdar, A. (2022). Conceptualising aged reproduction: genetic connectedness, son preference and assisted reproduction in North India. *Reproductive Biomedicine & Society Online*, 14: 182-191 <https://doi.org/10.1016/j.rbms.2021.11.005>.
- Majumdar, A., & Qureshi, A. (2022). Thinking about infertility from a mixed methods perspective: the need to look at toxicity in rural India. *Sexual and Reproductive Health Matters*, 29 (2): 413-19. <https://doi.org/10.1080/26410397.2021.1999565>.



## Badri Narayan Rath

PROFESSOR

---

Email: [badri@la.iith.ac.in](mailto:badri@la.iith.ac.in)

### RESEARCH INTERESTS

Economic Growth, Industrial Economics, International Trade, Public Finance, Energy Economics and Applied Econometrics

### SELECTED RESEARCH PROJECTS

- An economic assessment of electronic national agricultural market [Funding agency: MGNCRE, MoE, GoI]
- Nexus between cities, externalities, growth and poverty in India: A post COVID-19 on urban poor and slum dwellers. [Funding agency: IoE, UoH, MoE, GoI]

### SELECTED PUBLICATIONS

- Behera, H., Gunadi, I., & Rath, B. N. (2023). COVID-19 uncertainty, financial markets and monetary policy effects in case of two emerging Asian countries. *Economic Analysis and Policy*, 78, 173-189.
- Shaurav, K., & Rath, B. N. (2023). Measurement and determinants of corruption across Indian states. *Journal of Economic Studies*.
- Rath, B. N., Panda, B., & Akram, V. (2023). Convergence and determinants of ICT development in case of emerging market economies. *Telecommunications Policy*, 47(2), 102464.
- Akram, V., Rath, B. N., & Panda, B. (2023). Convergence Analysis of Social Sector Expenditure and its Components: Evidence from the Indian States. *Applied Economics*, 55(33), 3850-3862.
- Rath, B. N. (2022). Understanding the role of trade agreements in Indonesia's FDI.
- Akram, V., & Rath, B. N. (2022). PUBLIC HEALTH EXPENDITURE CONVERGENCE ACROSS INDIAN STATES: NEW EVIDENCE FROM LM AND RALS-LM TESTS. *The Singapore Economic Review*, 1-24.



## Chandan Bose

ASSISTANT PROFESSOR

---

Email: [chandanbose@la.iith.ac.in](mailto:chandanbose@la.iith.ac.in)

### RESEARCH INTERESTS

Sexual practices and intimacies within India's queer communities, Craft production in contemporary India

### SELECTED RESEARCH PROJECTS

- Risk and Intimacy: Understanding violence taking place through queer dating applications in contemporary India. [Funding agency:ICSSR, Funding amount(in lakhs): 15]

### SELECTED PUBLICATIONS

- Co-editor, Encountering Craft, Methodological Approaches from Anthropology, Art History, and Design, Routledge London, 2023
- “Old Tales through New Images, and New Tales through Old Images: Ethnography of a Jambavantaru katha (narrative) performance in Telangana”, Text and Performance Quarterly. July 2022.
- How Does Law Prescribe Circulation of Children? Understanding Different Kinds of Movement Within the Adoption Law in India. Journal of Family Issues. July 2021.
- “Identifying ‘authorized users’, identifying kin: negotiating relational worlds through Geographical Indications registration”, Contemporary South Asia, 2021
- Perspectives on work, home and identity from artisans in Telangana: Conversations around Craft. Palgrave Macmillan, New York. (Monograph 2019)





## Dinabandhu Sethi

ASSISTANT PROFESSOR

---

Email: [dinabandhu@la.iith.ac.in](mailto:dinabandhu@la.iith.ac.in)

### RESEARCH INTERESTS

Macroeconomics, Monetary Economics, Public Finance, Financial markets

### SELECTED PUBLICATIONS

- Chang T, Sethi D, Tiwari AK & Wang, MC. (2023). Revisiting the Twin Deficits Hypothesis in the United States: Further Evidence based on System-Equation ADL Test for Threshold Cointegration. *The Journal of International Trade & Economic Development*, 1-16
- Sahoo PK & Sethi D (2022). Market efficiency of the cryptocurrencies: Some new evidence based on price-volume relationship, *International Journal of Finance and Economics*, 1-15.
- Sethi D & Acharya D (2020). Monetary Policy and Financial Stability: The Role of Inflation Targeting, *The Australian Economic Review* 53(1), 50-75.
- Threshold level of fiscal deficit: revisiting FRBMA limit in Indian states, *Journal of Social and Economic Development*, 1-26.
- Sethi D, Mohanty AK & Mohanty A. (2019). Has FRBM rule influenced fiscal deficit-growth nexus differently in India?, *Macroeconomics and Finance in Emerging Market Economies*, 1-15



**Gaurav Dhamija**

ASSISTANT PROFESSOR

---

Email: [gauravdhamija@la.iith.ac.in](mailto:gauravdhamija@la.iith.ac.in)

## RESEARCH INTERESTS

Applied Microeconometrics, Health Economics, Development Economics

## SELECTED RESEARCH PROJECTS

- Data Quality Assessment – During and Post Data Collection[Funding agency:Centre for research on the Economics of Climate, Food, Energy and Environment (CECFEE), Indian Statistical Institute Delhi Center, Funding amount(in lakhs): 5.84]
- Odisha Migration Study[Funding agency:International Rice Research Institute, Funding amount(in lakhs):160]

## SELECTED PUBLICATIONS

- Dhamija, G., & Sen, G. (2023). Lasting impact on health from natural disasters, potential mechanisms and mitigating effects. *Environment and Development Economics*, 28(1), 1–24. <https://doi.org/10.1017/S1355770X2200016X>
- Dhamija, G., & Sen, G. (2022). Impact of early life shocks on educational pursuits–Does a fade out co-exist with persistence?. *Plos one*, 17(10), e0275871. <https://doi.org/10.1371/journal.pone.0275871>
- Roychowdhury, P., & Dhamija, G. (2022). Don't cross the line: Bounding the causal effect of hypergamy violation on domestic violence in India. *Journal of the Royal Statistical Society Series A: Statistics in Society*, 185(4), 1952–1978. <https://doi.org/10.1111/rssa.12858>
- Dhamija, G., Ojha, M., & Roychowdhury, P. (2022). Hunger and health: Reexamining the impact of household food insecurity on child malnutrition in India. *The Journal of Development Studies*, 58(6), 1181–1210. <https://doi.org/10.1080/00220388.2022.2029419>
- Roychowdhury, P., & Dhamija, G. (2021). The causal impact of women's age at marriage on domestic violence in india. *Feminist Economics*, 27(3), 188–220. <https://doi.org/10.1080/13545701.2021.1910721>



Haripriya Narasimhan

ASSOCIATE PROFESSOR

---

Email: [haripriya@la.iith.ac.in](mailto:haripriya@la.iith.ac.in)

## RESEARCH INTERESTS

Medical Anthropology and Anthropology of the Media, Globalisation, Kinship

## SELECTED RESEARCH PROJECTS

- Odisha Migration Study[Funding agency:International Rice Research Institute, Funding amount(in lakhs):22]
- Third-Party Evaluation of the Polavaram Irrigation Project.Funding agency:Polavaram Project Authority, Government of India, Funding amount(in lakhs):22

## SELECTED PUBLICATIONS

- (with Kanaka Himabindu Pottumuthu) 'Smart City Stories: Case study of a city in South India' in Madhulika Sahoo et al (ed) *Ethnographic Research in Social Sciences*, Routledge UK.
- (with Mahati Chittem and Pooja Purang) 'Pandemic Times in WhatsApp-ed Nation: Gender ideologies in India during COVID-19' in *Viral Loads: Anthropologies of urgency in the time of COVID-19*, (ed) Lenore Manderson, Nancy J. Burke and Ayo Wahlberg, UCL Press, UK
- 'Struggling with Nayi Soch: Hindi Television Serials Today' In Manjeet Bhatia (ed) *Locating Gender in the New Middle Class in India*. Indian Institute of Advanced Studies, Shimla
- (with C.J.Fuller) *Tamil Brahmins: The Making of a Middle-Class Caste*. Chicago: The University of Chicago Press.
- 'Where there is no doctor: Narratives on biomedical health care practitioners in Chennai, South India'. In Arima Mishra and Suhita Chopra Chatterjee (ed) *Multiple Voices and Stories: Narratives of Health and Illness*. Orient Blackswan.





**Indira Jalli**

ASSOCIATE PROFESSOR

---

Email: [indiraj@la.iith.ac.in](mailto:indiraj@la.iith.ac.in)

## RESEARCH INTERESTS

Nation , culture and humanities

## SELECTED PUBLICATIONS

- Jalli, I. (2018). Theorising Gender, IGNOU Self-Learning Material for MA Degree Programmes, School of Social Sciences.
- Jalli, I. (2018). Feminist Theories and Feminist Politics. IGNOU Self-Learning Material for MA Degree Programmes, School of Social Sciences.
- Jalli, I. (2016). Body and its Fringes: Beauty as a Genre in Architecting the Nation. In *Figurationen des Politischen 1 und 2* (pp. 295–319). Brill Fink.
- Jalli, I. (2010). 'Caste'–[ing] Gender: Caste and Patriarchy in Ancient Hindu Jurisprudence. In Adekunle, J. O., & Williams, H. V. (Eds.). (2010). *Color struck: Essays on race and ethnicity in global perspective*. University Press of America.
- Jalli, I. (2003) “Dalit Feminism and Indian Academics” in Vaishali Diwakar, Swati Dyahadroy, Anagha Tambe (guest eds), *IWAS, Newsletter ( Bhartiya Stree Mukti Din Special Issue)*, December, 31.



**K. P. Prabheesh**

ASSOCIATE PROFESSOR

---

Email: [prabheesh@la.iith.ac.in](mailto:prabheesh@la.iith.ac.in)

## RESEARCH INTERESTS

Macroeconomics; International Finance; Econometric modelling, and academic journal/report writing

## SELECTED RESEARCH PROJECTS

- Covid -19 uncertainty and monetary policy[Funding agency:Asia-Pacific Applied Economics Association, Funding amount(in lakhs):1.7]
- Third-Party Evaluation of the Polavaram Irrigation Project.Funding agency:Polavaram Project Authority, Government of India, Funding amount(in lakhs):22]

## SELECTED PUBLICATIONS

- KP Prabheesh, B Prakash & Vuniivi V (2023) Assessment of Fiji's exchange rate, *Economic Analysis and Policy* 78, 1282-1305<https://doi.org/10.1016/j.eap.2023.05.013>
- KP Prabheesh, A Sasongko, and Indawan F (2023) Did the policy responses influence credit and business cycle co-movement during the COVID-19 crisis? Evidence from Indonesia, *Economic Analysis and Policy* (Elsevier Publication), 74, 243-255<https://doi.org/10.1016/j.eap.2023.02.007>
- Sanjiv. K & Prabheesh, K.P. (2023), Reassessing the Dynamics between Exchange, Oil, Stock Markets and Uncertainty during COVID-19 in Emerging Market Economies, *MethodsX*, (Elsevier Publication), <https://www.sciencedirect.com/science/article/pii/S2215016122003648>
- Prabheesh, K.P. , Sanjiv. K and Shareef. A.O (2023), Revisiting the Impact of Foreign Portfolio Investment on Stock Market Performance during COVID-19 Pandemic Uncertainty: Evidence from India, *MethodsX*, (Elsevier Publication), <https://doi.org/10.1016/j.mex.2022.101988>
- Prabheesh, K.P. and Sanjiv. K (2023), How Do the Financial Markets Respond to Emerging Economies' Asset Purchase Program? Evidence from the COVID-19 Crisis, *Emerging Markets Finance and Trade*, (Taylor & Francis Publication), Vol 59,1591-1606<https://doi.org/10.1080/1540496X.2022.2148463>



**M. P. Ganesh**

ASSOCIATE PROFESSOR

---

Email: [mpganesh@la.iith.ac.in](mailto:mpganesh@la.iith.ac.in)

## RESEARCH INTERESTS

Cross-Cultural Virtual Teams, Mentoring and Coaching, Eco-Friendly Behaviours

## SELECTED RESEARCH PROJECTS

- Nurturing Interest in Science Education among Female High School Children through Training and Mentoring[Funding agency:Re sustainability, Funding amount(in lakhs):5]
- Competitiveness of Indian Technological Start-ups – An Exploratory Study[Funding agency:ICSSR, Funding amount(in lakhs):6.6]

## SELECTED PUBLICATIONS

- Etakula, H., & Ganesh M.P., (accepted), Executive Coaching Research: Possibilities and Vulnerabilities, International Journal of Business Excellence, DOI: 10.1504/IJBEX.2021.10039341
- Ganesh, M.P. (accepted), The effect of self-efficacy, psychological safety and meaningfulness of job on teacher effectiveness: A study among Indian engineering college teachers. International Journal of Learning and Intellectual Capital.
- Ganesh, M. P., & Ganesh, S. (2023). Using emotional intelligence and personal coping strategies to achieve work family balance in frontline hotel employees. Journal of Human Resources in Hospitality & Tourism, 22(2), 296–319.
- George, P. N., Ganesh, M. P., Chawak, S., & Chittem, M. (2022). Factors Associated with Choosing the Kerala Model of Palliative Care versus Standard Care among Indian Cancer Patients. Indian Journal of Medical and Paediatric Oncology, 43.
- Pullangotte, A., & Paramasivam, G. M. (2021). Development of theory of mind: importance of nurturance. Journal of Children's Services, 16(4), 346–363.





## Mahati Chittem

ASSOCIATE PROFESSOR

Email: mahati@la.iith.ac.in

### RESEARCH INTERESTS

Chronic disease management with a focus on psycho-oncology, endocrinology, women's health, chronic kidney disease. Cultural aspects of health behaviour change with a focus on diet, exercise and safe sex

### SELECTED RESEARCH PROJECTS

- Study of calcium channel expression and calcium dynamics in cells derived from Indian breast cancer patients[Funding agency:Indian Council of Medical Research ad-hoc project grant, Funding amount(in lakhs):54.2]
- 3D imaging based vein intrusion guide system for pediatric and geriatric healthcare. [Funding agency:Sree Padmavathi Venkateswara Foundation (SreePVF) Grant, Funding amount(in lakhs):238]

### SELECTED PUBLICATIONS

- Lathia, T.\*, Selvan, C.\*, Namjoshi, S., Chawak, S., Kelada, L., & Chittem, M. (2022). Indian physicians' attitudes and practice regarding menopause and its management. *Menopause* 29(11): 1323-1328.
- Chawak, S.\*, Chittem, M.\*, Dhillon, H., Huilgol, N., & Butow, P. (2022). Treatment-related communication experiences and expectations among Indian cancer patients receiving radiation therapy and their family members: A qualitative study. *Patient Education and Counseling* 105(9): 2913-2922
- Chittem, M., Elliott, J., & Olver, I. (2021). Demonstrating the importance of cultural considerations at end-of-life utilising the perspective of Indian patients with cancer. *Supportive Care in Cancer* <https://doi.org/10.1007/s00520-021-06656-1>
- Chittem, M.\*, Kelada, L.\*, Muppavaram, N., Lingappa, L., & Wakefield, C.E. (2021). Unmet and under-met needs among Indian parents of children with neurological disorders: A mixed methods study. *Journal of Pediatric Nursing*. <https://doi.org/10.1016/j.pedn.2021.11.015>.
- Maya, S., Banerjee, S., Chawak, S., Parker, P., Kandikattu, S., & Chittem, M. (2021). Oncologists' experiences with discussing cancer prognosis with patients and families: Perspectives from India. *Translational Behavioural Medicine* <https://doi.org/10.1093/tbm/ibab070>



## Nandini Ramesh Sankar

ASSISTANT PROFESSOR

---

Email: [nandini@la.iith.ac.in](mailto:nandini@la.iith.ac.in)

### RESEARCH INTERESTS

Modernist fiction; literature and the other arts (including Modernist art, ekphrasis, still-life painting, and graphic novels); and literature and philosophy.

### SELECTED PUBLICATIONS

- Ramesh Sankar, Nandini. "Potatosoap': Moly in James Joyce's Ulysses," *ANQ: A Quarterly Journal of Short Articles, Notes and Reviews* (2022). DOI: 10.1080/0895769X.2022.2059752.
- Krishnakumar, Rajalekshmi and Nandini Ramesh Sankar. "The Jinling Patriots of J. H. Prynne's Kazoo Dreamboats." *Notes and Queries* (2022).
- Ramesh Sankar, Nandini and V. Neethi Alexander. "The War That Never Happened: Horror and History in Mark Z. Danielewski's House of Leaves." *ELN (English Language Notes) Special Issue: Trauma and Horror*, 59.2 (Fall 2021): 35-49.
- Ramesh Sankar, Nandini and Deepsikha Changmai. "Between Complicity and Solidarity: The Politics of Representation in Bhimayana." *Journal of Asian Studies* 79.2 (May 2020): 303-334.
- Ramesh Sankar, Nandini and Deepsikha Changmai. "Word, Image, and Alienated Literacies in the Graphic Novels of Orijit Sen." *Word and Image* 35.2 (June 2019): 112-125.



**Neeraj Kumar**

ASSISTANT PROFESSOR

---

Email: [neeraj.kumar@la.iith.ac.in](mailto:neeraj.kumar@la.iith.ac.in)

## RESEARCH INTERESTS

Sensorimotor Learning, Motor Memory Consolidation, and Brain stimulation

## SELECTED RESEARCH PROJECTS

- Role of motor and sensory plasticity in motor memory retention, consolidation and enhancement[Funding agency:DST-Cognitive Science Research Initiative, Funding amount(in lakhs):73]
- Nature of Plasticity In Somatosensory Cortex And Its Role In Motor Learning And Memory Consolidation[Funding agency:SERB-SRG, Funding amount(in lakhs):30.91]

## SELECTED PUBLICATIONS

- Kumar, N., Sidarta, A., Smith, C., & Ostry, D. J. (2022). Ventrolateral Prefrontal Cortex Contributes to Human Motor Learning. *Eneuro*, 9(5). <https://doi.org/10.1523/ENEURO.0269-22.2022>
- Kumar, N., van Vugt, F. T., & Ostry, D. J. (2021). Recognition memory for human motor learning. *Current Biology*, 31(8), 1678–1686. <https://doi.org/10.1016/j.cub.2021.01.097>
- Kumar, N., Manning, T. F., & Ostry, D. J. (2019). Somatosensory cortex participates in the consolidation of human motor memory. *PLoS biology*, 17(10), e3000469. <https://doi.org/10.1371/journal.pbio.3000469>
- Kumar, N., Kumar, A., Sonane, B., & Mutha, P. K. (2018). Interference between competing motor memories developed through learning with different limbs. *Journal of neurophysiology*, 120(3), 1061–1073. <https://doi.org/10.1152/jn.00905.2017>
- Mukherjee, S., Srinivasan, N., Kumar, N., & Manjaly, J. A. (2018). Perceptual broadening leads to more prosociality. *Frontiers in Psychology*, 9, 1821. <https://doi.org/10.3389/fpsyg.2018.01821>





## Prakash Mondal

ASSOCIATE PROFESSOR

---

Email: [prakashmondal@la.iith.ac.in](mailto:prakashmondal@la.iith.ac.in)

### RESEARCH INTERESTS

Mathematical/Formal Linguistics, Theoretical Cognitive Science

### SELECTED RESEARCH PROJECTS

- Semantic Processes in bilingual children that relate to production-comprehension asymmetries.[Funding agency:DST-Cognitive Science Research Initiative, Funding amount(in lakhs):20]

### SELECTED PUBLICATIONS

- Mondal, P. Towards a Unifying Theory of Linguistic Meaning. Integrative & Communicative Biology 16(1): 2200666. <https://doi.org/10.1080/19420889.2023.2200666P>
- Mondal, P: Towards a Unified Representation of Linguistic Meaning. Open Linguistics 9(1):20220225, <https://doi.org/10.1515/opli-2022-0225>
- Mondal, P: The Puzzling Chasm between Cognitive Representations and Formal Structures of Linguistic Meanings. Cognitive Science, e13200: <https://doi.org/10.1111/cogs.13200>
- Mondal, P: A Unifying Perspective on Perception and Cognition through Linguistic Representations of Emotion. Frontiers in Psychology 13: 768170. doi: 10.3389/fpsyg.2022.768170
- Soujanya, P. & Mondal, P: The Mental Representation of Sounds in Speech Sound Disorders (Co-authored with P Soujanya). Palgrave Communications (Nature) 8: 27. <https://doi.org/10.1007/s10516-021-09534-x>



**Shubha Ranganathan**

ASSOCIATE PROFESSOR

Email: [shubha@la.iith.ac.in](mailto:shubha@la.iith.ac.in)

## RESEARCH INTERESTS

Critical and qualitative psychology, qualitative explorations of local practices of healing among marginalized groups, as well as health and disability-related projects, parenting and care in the context of autism, neurodiversity

## SELECTED RESEARCH PROJECTS

- 'Invisible disabilities and long-term care: A qualitative study of family and institutional care arrangements for persons with intellectual and cognitive disabilities in India'[Funding agency: Indian Council for Social Science Research, Funding amount(in lakhs):8]
- Odisha Migration Study[Funding agency: International Rice Research Institute, Funding amount(in lakhs):160]

## SELECTED PUBLICATIONS

- Ranganathan, S. (2023). Chronic relationships and mental health care: Global pharmaceuticals in a local healing shrine in India, *Anthropology & Medicine*, DOI: 10.1080/13648470.2023.2212212
- Kottai, S.R. & Ranganathan, S. (2023) "Initially, medicines will be given, and then we need to study the case": Medicalized perspectives about chronicity and mental health care in Kerala, *Anthropology & Medicine*, DOI: 10.1080/13648470.2023.2212206
- Ranganathan, S. (2023). 'I do not feel well here as such. But it has become my home': Abandonment and care in healing shrines, *Anthropology & Medicine*, <https://doi.org/10.1080/13648470.2023.2171237>
- Varghese, D. & Ranganathan, S. (2022). Informal work from home: Understanding vulnerability and well-being among women in Kudumbashree microenterprises. *Asian Women*, 38 (4), 23-50. <https://doi.org/10.14431/aw.2022.12.38.4.23>
- Kottai, S. & Ranganathan, S. (2021). When 'care' leads to 'chronicity': exploring the changing contours of care of homeless people living on the streets in India. In L. Montesi and M. Calestani (Eds.). *Managing Chronicity in Unequal States: Ethnographic perspectives on caring*. UCL Press.



**Shuhita Bhattacharjee**

ASSISTANT PROFESSOR

---

Email: [shuhita@la.iith.ac.in](mailto:shuhita@la.iith.ac.in)

## RESEARCH INTERESTS

Postsecular Theory; Studies on Religion and Secularism; Nineteenth-Century Literature and Culture; Gender, Sexuality and Queer Studies; Postcolonial Studies; Posthuman Theory; Cultural Studies; Thing Theory; Diaspora Studies; Graphic Novels; Popular Literature and Culture, New Woman Literature; Discourses of the Hijab; and Anglo-Indian History and Culture

## SELECTED RESEARCH PROJECTS

- Risk and Intimacy: Understanding violence taking place through queer dating applications in contemporary India. [Funding agency: Indian Council for Social Science Research, Funding amount (in lakhs): 15]
- 'Designing and Disseminating Picture Books on Sexual Health and Consent: Taking the conversation to Children, Doctors, Teachers', [Field Work underway].

## SELECTED PUBLICATIONS

- "Criminal Mesmerism, Culpability, and the Automaton in Richard Marsh," *Victorian Automata: Mechanism and Agency in the Nineteenth Century*. Cambridge University Press
- *Colonial Idols in British and Anglo-Indian Literature: Religion and the Non-Human in Postcolonial Culture*. [Monograph, Forthcoming from Routledge, USA]
- "'Rosy Ki Khwaheeshein': Scripted Romance and Acquaintance Rape in Alankrita Shrivastava's Oeuvre of Female Desire," In *Women Filmmakers in Contemporary Hindi Cinema: Looking through their Gaze*. Edited by Aysha Iqbal Viswamohan. Palgrave Macmillan [<https://link.springer.com/book/9783031102318>]
- "Of Mahatmas and Chelas: Theosophy and the 'Cartography of the Supernatural' in Richard Marsh and F. Anstey." In *Victorian Popular Fictions Journal*. 1.2 (2019).
- "Relocating Home and Diasporising the South Asian Queer in Divakaruni and Patil." In *Beyond Trishanku: Diaspora Poetics and Homing in South Asian Women's Writing*. Edited by Shilpa Daithota Bhat. Lanham, Boulder, New York and London: Lexington Books, 2018.





## Srirupa Chatterjee

ASSOCIATE PROFESSOR

---

Email: [srirupa@la.iith.ac.in](mailto:srirupa@la.iith.ac.in)

### RESEARCH INTERESTS

Body Image Studies, Gender Studies, Masculinity Studies, Contemporary and Multiethnic American Fiction, Literary Theory

### SELECTED RESEARCH PROJECTS

- Addressing the Challenges in Scholarly Writing among Non-Native Speakers of English: A Rhetorical and Pedagogical Approach.[Funding agency:IIT Hyderabad, Funding amount(in lakhs):3.45]
- Body Image and Female Identity: Popular Perceptions, Theoretical Interventions and Possible Implications[Funding agency:ICSSR, Funding amount(in lakhs):7]

### SELECTED PUBLICATIONS

- Chatterjee, Srirupa and Swathi Krishna S. "Roads, Misogyny, and the Rape Culture in Joyce Carol Oates' Rape: A Love Story and Cara Hoffman's So Much Pretty." LIT: Literature Interpretation Theory. (Summer 2023)
- Chatterjee, Srirupa and Shreya Rastogi. "Colorism and Female Identity: Discourses from Twentieth Century Indian Literature and Culture." Papers on Language and Literature. 58.3, 2022. (Southern Illinois University Edwardsville, USA).
- Anand, Aswathi V. and Srirupa Chatterjee. "Overcoming Daddy: The Daughter's Rite of Passage in Joyce Carol Oates' Late Novels." Critique: Studies in Contemporary Fiction. 63.3 (2021): 296-308. <https://doi.org/10.1080/00111619.2021.2018988>
- Krishna S., Swathi and Srirupa Chatterjee. "Between Maternity and Autonomy: Radical Mothering in Mona Simpson's Anywhere but Here." Critique: Studies in Contemporary Fiction. 63.2 (August 2021): 232-246. <https://doi.org/10.1080/00111619.2021.1959291>
- Chatterjee, Srirupa and Nilanjana Ghosal. "Obesity, Contemporary Gothic and the Rhetoric of Excess in Sapphire's Push." Journal of Language, Literature and Culture. 68.1 (February, 2021): 10-26.<https://doi.org/10.1080/20512856.2021.1882025>

## DISTINGUISHED FACULTY



### Paresh Kumar Narayan

Professor, Monash School

[PareshKumar.Narayan@monash.edu](mailto:PareshKumar.Narayan@monash.edu)

Paresh Kumar Narayan is a Professor at Monash Business School. He is the President of the Asia-Pacific Applied Economics Association, Editor-in-Chief of Emerging Markets Finance and Trade, and Managing Editor of Bulletin of Monetary Economics and Banking. Paresh is also a Distinguished Professor at the Indian Institute of Technology Hyderabad, and an adjunct Professor in several universities around the world.

Paresh's research interests are in Applied Econometrics and Financial Markets. He has published over 380 papers in international refereed journals and has the distinguished title of a high cited researcher over 5 consecutive years (2017-2021), with an h-index of 88. He is ranked 544 by Stanford University amongst 9 million researchers globally.

Professor Narayan is a consultant to multiple organisations, including, Bank Indonesia, Central Bank of Sri Lanka, Asian Development Bank, Development Bank Institute, Commonwealth Secretariat, AusAID, South Pacific Commission, Forum Secretariat, UNDP, ILO, Solomon Island National Provident Fund, Central Bank of Solomon Islands, USP, and, Economic Research Institute of ASEAN (ERIA).

## ADJUNCT FACULTY



### JANDHYALA TILAK

---

ICSSR National Fellow & Distinguished Professor, Council for Social Development, New Delhi.


[jtilak2017@gmail.com](mailto:jtilak2017@gmail.com)

Former Professor & Vice-Chancellor, National University of Educational Planning and Administration, Dr. Tilak, an economist of education, holds a Ph.D. Degree in Economics of Education from the Delhi School of Economics, University of Delhi. Dr. Tilak was on the research and teaching faculty of the National University of Educational Planning and Administration, University of Delhi, Indian Institute of Education, University of Virginia and the Hiroshima University (Japan), and a Visiting Professor in Economics, Sri Sathya Sai Institute of Higher Learning. He was also on the research staff of the World Bank.

Dr. Tilak has authored/edited twenty books and about 300 research papers in the area of economics of education and development studies, published in reputed journals. His current and past publishers (of his books) include Sage, Orient BlackSwan, Routledge/Taylor & Francis, Academic Foundation, and UNESCO-IIEP.

Recipient of Swami Pranavananda Saraswati National Award of the UGC for his outstanding scholarly research in Education (1999), he has also achieved Dr. Malcolm Adiseshiah Award for distinguished research contributions to development studies (2003), Inspirational Teacher of the Year Global Education Award 2012, and Devang Mehta national education award for outstanding contribution to education (2015).





Dr Tilak had a privilege of delivering a keynote address to a meeting of the Noble laureates in Barcelona in 2005. Prof Tilak was the Editor of Journal of Educational Planning and Administration and is on the editorial board of several professional journals.

Professor Tilak also served as President of the Comparative Education Society of India (2010-12), and is on the Board of Directors of the Comparative Education Society of Asia.



## S IRUDAYA RAJAN

Founder chair- The International Institute of Migration and Development (IIMAD)  
rajan@iimad.org

Professor S. Irudaya Rajan was a Former Professor at the Centre for Development Studies (CDS), Kerala (close 40 years of post-graduate experience). Currently, he is the chair of the KNOMAD (The Global Knowledge Partnership on Migration and Development,) World Bank working group on internal migration and urbanization.

He is one of the expert committee members to advise the Government of Kerala on Covid-19. He has published in international journals on social, economic, demographic, psychological and political implications of migration on individuals, community, economy and society.

He is the editor of the annual series India Migration Report since 2010 and South Asia Migration Report since 2017 published by Routledge. Founder Editor in Chief, Migration and Development (Taylor and Francis).



## ANJAL PRAKASH

---

Research Director and Adjunct Professor, Bharti  
Institute of Public Policy, ISB  
[anjali\\_prakash@isb.edu](mailto:anjali_prakash@isb.edu)

Dr. Anjal Prakash is Research Director and Adjunct Associate Professor, Bharti Institute of Public Policy, Indian School of Business (ISB), Hyderabad India. Before joining ISB, Dr. Prakash worked with TERI-School of Advanced Studies, New Delhi, India as an Associate Professor in the Department of Regional Water Studies. His earlier association was with International Center for Integrated Mountain Development (ICIMOD), in Kathmandu, Nepal where he was the Coordinator of the programme - Himalayan Adaptation, Water and Resilience (HI-AWARE) Research on Glacier and Snowpack Dependent River Basins.

Before joining ICIMOD in 2014, Dr Prakash led the South Asia Consortium for Interdisciplinary Water Resources Studies (SaciWATERS) as Executive Director. SaciWATERS is a south Asian thinktank that works in six countries of South Asia.

His earlier associations were with WaterAid, New Delhi , Water and Sanitation Management Organisation (WASMO), Gandhinagar, Gujarat and VIKSAT, Ahmedabad, India.



## MRIDULA ANAND

---

Founder- Mridula centre of Arts  
silambamo5@yahoo.com

Ms. Mridula Anand is a disciple of renowned Bharatanatyam exponent Padmashree Professor Sudharani Raghupathy. She has performed in many places in India under the auspices of renowned banners. She has performed in all the major dance festivals in Chennai and in other parts of India and was awarded the 'Award for Excellence' in 2000 by Sri Parthasarathy Swami Sabha, as part of its centenary year celebrations.

Ms. Mridula Anand was also awarded the title 'Bharata Kala Bhushana' during the 32nd anniversary celebrations of Sree Bharatalaya titled 'Natya Devo Bhava' in 2002. She also received the prestigious 'Yuva Kala Bharati' in 2009. She was the Cultural Chairperson at the Sri Venkateswara Temple, Pittsburgh, USA for the 2006-2007 year.

Ms. Mridula then completed a Masters in Molecular Biology at Stanford University, USA in 2005 and moved to Pittsburgh USA where she continued her research work at the University of Pittsburgh, PA before coming to India (Hyderabad) in mid-2008.

She worked as Researcher at the Center for Leadership Innovation and Change, Indian School of Business, Hyderabad. She is currently an Innovation and IP researcher with a Law Degree.





## NANDA KISHORE KANNURI

---

Additional Professor- Public health foundation of India  
nandu.k@iiphh.org

Dr. Nanda Kishore Kannuri is Additional Professor in the department of Social and Behaviour Sciences at Indian Institute of Public Health, Hyderabad, an academic arm of Public Health Foundation of India. He has more than 20 years of work experience – including action research, program management in the social development sector, teaching, academic research, and consultancy.

He holds MA, MPhil in Anthropology from the University of Hyderabad, India and a PHD in Medical Anthropology and Cultural Psychiatry from the University College London (UK). Dr. Kannuri currently holds adjunct appointment at IIPH Shillong, and Dalla Lana School of Public Health, University of Toronto. Earlier he was as Honorary Fellow, School of Social and Political Science, University of Edinburgh.

He is keen to apply anthropological approaches and ethnographic methods to research on contemporary issues in public health. Some research areas of his interest include Socio-cultural and ecological factors of health and well-being, Rural Health, Health policy & systems research, Ethnography of health and health care, Technology for health, Applied Medical Anthropology, Multi species ethnography, Community based participatory research approaches, Human Centred design, and One Health.



## TIMOTHY MARTHAND

---

Founder SOTA- State Of The Art

Mr. Timothy Marthand, Founder of SOTA, is pioneering a new understanding to an art that has already seen many heroes.

Born in Hyderabad, India, his encounters with classical music began at home with his father, a concert violinist. In 1992 he gave his debut, playing with members of the Nizam's Symphony Orchestra. Marthand has performed all over the world, from New York to Berlin, and is the only Indian to be represented at the prestigious International Piano Foundation in Lake Como, Italy.

Marthand now aspires to curate musicians and performances of the highest calibre in Hyderabad - that will captivate audiences and inspire communities to grow artistically.

## ADMINISTRATIVE AND TECHNICAL STAFF



**ABANI KUMAR DAS**

---

Executive Assistant

Email: [abani.das@admin.iith.ac.in](mailto:abani.das@admin.iith.ac.in)

Office: A-701 | Phone: 040-23016500



**ANJANEYULU BOTTA**

---

Technician

Email: [anjaneyulu.b@la.iith.ac.in](mailto:anjaneyulu.b@la.iith.ac.in)

Office: B-517 | Phone: 040-23016500



**CHINTHA ANJALI**

---

Multi Skilled Assistant

Email: [anjali.c@admin.iith.ac.in](mailto:anjali.c@admin.iith.ac.in)

Office: B-520 | Phone: 040-23016500



**MALOTH HARISH NAIK**

---

Junior Technician

Email: [Harish.m@la.iith.ac.in](mailto:Harish.m@la.iith.ac.in)

Office: B-517 | Phone: 040-23016500



# PROGRAMS

## Ph.D.

The PhD programme in the Department of Liberal Arts offers resources that enable our students to do world-class research—passionate and committed faculty members, a rapidly growing library, generous monthly fellowships, and ample grants for fieldwork and conference travel. Students collaborate closely with faculty mentors and produce high quality publications in addition to their PhD dissertations.

The Liberal Arts Department currently offers PhD Programmes in the following disciplines:

- Anthropology And Sociology
- Cognitive Science
- Cultural Studies
- Development Studies
- Economics
- English Literature
- Linguistics
- Psychology



# PROGRAMS

## MA DS: MASTERS IN DEVELOPMENT STUDIES

The concern with development encompasses all aspects of human life – physical, psychological, cultural, political, economic, and ecological. The challenge is to train and conceive of professionals and roles that can critically inform ways in which these different areas of life affect one another. Through its interdisciplinary approach, the Development Studies program does just that.

S.No.	Courses	Core/Elective	Credits
1	Development Theory and Practice	Core	3
2	Development Economics	Core	3
3	Quantitative Research Methods for Behavioural Sciences	Core	3
4	Contemporary India	Core	3
5	Health and Society	Core	3
6	Environment and Society	Core	3
7	Social Exclusion, Social Justice and Development	Core	3
8	Qualitative Research Methods	Core	3
9	Labour and Development	Core	
10	State and Humanitarianism	Elective	3
11	Disability, Mental Health, and Development	Elective	3
12	Population and Development	Elective	3
13	Migration, Mobility and Development	Elective	3
14	Impact Evaluation	Elective	3
15	Statistics	Elective	3
16	Chronic disease management	Elective	3
17	Health Economics and policy	Elective	3
18	Cultural Perspectives on Development: Examining Race,	Elective	3
19	Sexuality and Development	Elective	3
20	Summer Internship		6
21	Dissertation Proposal Seminar		2
22	Seminar Series		1
23	Dissertation		12



## MA HGS:MASTERS IN HEALTH, GENDER AND SOCIETY

The Department offers a unique MA program in Health, Gender and Society (HGS), designed to enable innovative and rigorous research to address social problems in the area of health and gender in contemporary India. With dedicated internship and dissertation components, this two-year full-time program offers students a formidable and challenging platform from which they can engage with contemporary research and professional practice in India and across the globe.

S.No	Courses	Core/Elective	Credits
1	Health and Society	Core	3
2	Gender and Public Policy	Core	3
3	Anthropology of Reproduction	Core	3
4	Cross Cultural approaches to health	Core	3
5	Quantitative Research Methods for Behavioural Sciences	Core	3
6	Disability, Mental Health and Development	Core	3
7	Qualitative Research Methods	Core	3
8	Medical Anthropology	Core	3
9	Ageing, Health and Development	Elective	3
10	Impact Evaluation	Elective	3
11	Mental Health and Gender	Elective	3
12	Statistics	Elective	3
13	Health, Economics and Policy	Core	3
14	Positive Psychology	Elective	3
15	Chronic Disease Management	Elective	3
16	Gendering (un)wellness narratives: A Literary- Cultural Perspective	Elective	3
17	Sexuality and Development	Elective	2
18	Dissertation	Core	4
19	Seminar Series	Core	1
20	Summer internship	Core	6



## MINOR IN ECONOMICS

We offer foundational training in different aspects of economics

- Macroeconomics
- Financial Institutions and Markets
- Public Finance and Public Policy
- Impact Evaluation



## CREATIVE ARTS

LA at IIT Hyderabad integrates into its curriculum courses in the Fine Arts and the Performing Arts, unified under the rubric of "Creative Arts". Currently, students choose from a wide range of 1-credit courses every semester as shown below:

Courses	Total Credits
CA 50043: Creative Thinking and Mastery (3 credits)	3
CA50033: Appreciation of World Music (2 credits) + 1 Elective (1 credit; selection from the Electives basket)	3
CA50023: Heritage and sustainability (3 credits)	3
CA50013: Sentiments and Psychology through Indian classical dance (2 credits) + 1 Elective (1 credit; selection from the Electives basket)	3



These extremely popular courses are offered by reputed practising artists from India and abroad rather than full-time academics, so that students can have a hands-on encounter with the arts outside of typical textbook-oriented teaching and learning environments. We also offer a Minor course in Creative Arts.

## RESEARCH FACILITIES- COGNITIVE SCIENCE



### Transcranial Magnetic Stimulation (TMS) System

TMS is a noninvasive procedure that uses magnetic fields to stimulate neurons in the cortical brain areas. TMS can be used to inhibit or excite brain regions to assess their causal role in a cognitive process

### Electromyogram (EMG)

Two-channel EMG records muscle activity and Motor evoked Potential (MEP) in response to magnetic stimulation to measure cortical excitability

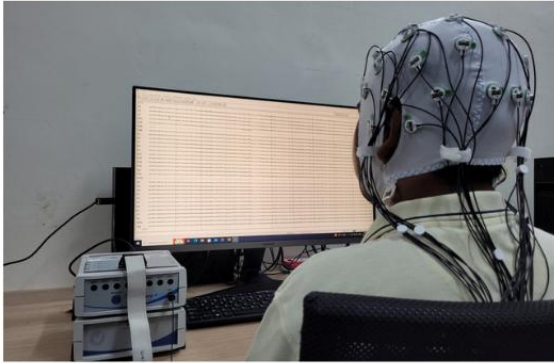


### Nerve Stimulator

Nerve Stimulator is used for the peripheral nerve stimulation and measure the Sensory Evoked Potentials (SEP).

Studio  
Shodwe

## RESEARCH FACILITIES- COGNITIVE SCIENCE



### **Electroencephalogram (EEG)**

EEG measures the electrical activity of the brain using active electrodes placed on scalp. Real-time EEG data analysis can be used for performing closed-loop TMS.

### **Digitizing Tablet**

Tablet is used to record the hand movement through the stylus in various motor learning task.



### **VR Frame Setup**

Frame is used in combination with Digitizing Tablet to manipulate the visual information of hand position to induce various kinds of motor learning.



# RESEARCH FACILITIES- DEVELOPMENT STUDIES

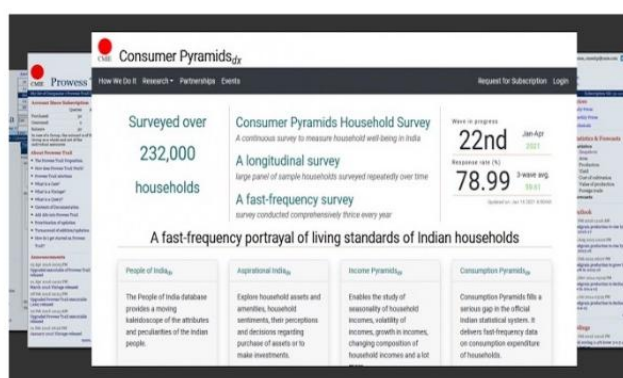
## STATA Software

Stata is a statistical software package that provides a comprehensive suite of tools for data analysis, data management, and graphics. It is widely used by researchers, economists, social scientists, and other professionals in various fields. It offers a user-friendly interface that allows users to easily import, clean, and manipulate data. It supports a wide range of data formats, including Excel, CSV, and databases, and provides powerful data management features such as sorting, merging, and reshaping datasets.



## Consumer Pyramids Household Survey (CPHS)

CPHS is a survey conducted by the Centre for Monitoring Indian Economy (CMIE) in India. It collects data on various aspects of households, including their income, expenditure, savings, employment, education, health, and demographics. The CPHS is known for its large sample size and longitudinal nature. It follows a panel design, where a representative sample of households is surveyed repeatedly over time. This allows researchers to track changes in household characteristics, consumption patterns, and economic outcomes over time.



## RESEARCH FACILITIES- DIGITAL HUMANITIES



## RESEARCH FACILITIES- LINGUISTICS



### 2-channel electroglottograph (EG2-PCX)

This is used to analyze speech data to find out certain patterns of voicing in order to gather evidence about our hypotheses on mental representations of sounds.

## RESEARCH FACILITIES- ECONOMICS



EPWRF India Time Series





## BOOK PUBLICATIONS



Chandan Bose and Meera Mohsini (Eds.) *Encountering Craft: Methodological Approaches from Anthropology, Art History, and Design*. Routledge, 2023.

Shuhita Bhattacharjee. *Postsecular Theory: Texts and Contexts*. Orient Blackswan, 2023.

Swathi Krishna S. and Srirupa Chatterjee (Eds.) *Gendered Violence in Public Spaces: Women's Narratives of Travel in Neoliberal India*. Rowman and Littlefield, 2023.

Amrita Datta. *Migration and Development in India: The Bihar Experience*. Routledge, 2022.

Prakash Mondal. *Language, Biology, and Cognition: A Critical Perspective*. Springer Nature, 2020.

Anindita Majumdar. *Surrogacy: Oxford India Short Introductions*. New Delhi: Oxford University Press, 2019

Chandan Bose. *Perspectives on work, home, and identity from artisans in Telangana: Conversations around craft*. Palgrave Macmillan, 2019.

Anindita Majumdar. *Transnational Commercial Surrogacy and the (Un)Making of Kin in India*. New Delhi: Oxford University Press, 2017.

Prakash Mondal. *Natural Language and Possible Minds: How Language Uncovers the Cognitive Landscape of Nature*. Brill, 2017.

Prakash Mondal. *Language and Cognitive Structures of Emotion*. Springer Nature, 2016.

Srirupa. Chatterjee (Ed.) *The Scarlet Letter*. By Nathaniel Hawthorne. 1850. Hyderabad: Orient Blackswan Pvt. Ltd, 2016.

Christopher J. Fuller and Haripriya Narasimhan. *Tamil Brahmans: The making of a middle-class caste*. University of Chicago Press, 2014.

Prakash Mondal. *Language, Mind and Computation*. Palgrave Macmillan, 2014.

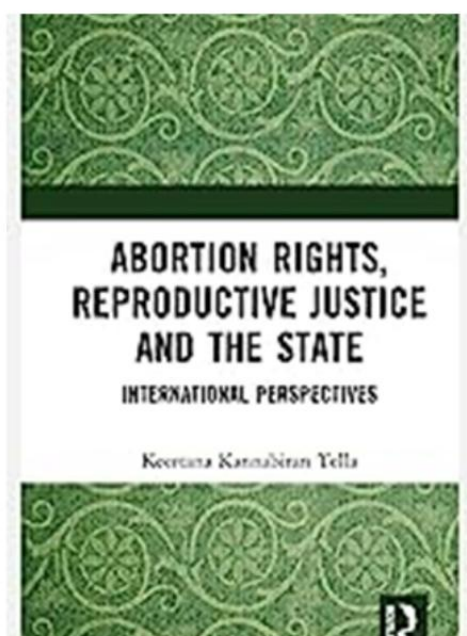
## RESEARCH ACHIEVEMENTS

Department faculty are involved in wide-ranging research funded by the Indian Council of Social Science Research, Ministry of Education, Department of Science and Technology, Department of Information Technology, NWO-WOTRO, The Netherlands, Shastri Indo-Canadian Institute, The Wellcome Trust, UK, Swedish Research Council, and the International Rice Research Institute.

PhD graduates from the Department have gone on to work in academic positions in various IITs, IIMs, public and private universities, and national research institutes, as well as the corporate sector, development sector and government organizations. MA graduates have gone on to pursue higher education and undertake research in the IITs, IIMs, the University of Chicago, University of Pennsylvania, Aarhus University, and work in the development sector in various government and non-government orga (sentence incomplete)

MA graduates have gone on to pursue higher education and undertake research in the IITs, IIMs, the University of Chicago, University of Pennsylvania, Aarhus University, and work in the development sector in various government and non-government organizations.

Total number of publications	415
Number of Projects	56
Funds received from these projects	1507.33 lakhs
Books published since 2020	5
High output: about 20 publications every quarter	20





## OUR COLLABORATORS



सत्यमेव जयते



**भारतीय रिज़र्व बैंक**  
**RESERVE BANK OF INDIA**



**icmr**  
INDIAN COUNCIL OF  
MEDICAL RESEARCH  
Serving the nation since 1951

**भारतीय आयुर्विज्ञान  
अनुसंधान परिषद**



GOA INSTITUTE OF MANAGEMENT



**Ministry of Education**  
Government of India



**Ministry of Electronics & Information Technology**  
Government of India



सत्यमेव जयते

**जल शक्ति मंत्रालय**  
**MINISTRY OF  
JAL SHAKTI**

**cecfee**  
Indian Statistical Institute



**Azim Premji  
University**



**National Institute of Mental Health and Neurosciences**

राष्ट्रीय मानसिक स्वास्थ्य और स्नायु विज्ञान संस्थान  
ರಾಷ್ಟ್ರೀಯ ಮಾನಸಿಕ ಆರೋಗ್ಯ ಮತ್ತು ನರವಿಜ್ಞಾನ ಸಂಸ್ಥೆ



**विज्ञान एवं प्रौद्योगिकी विभाग**  
**DEPARTMENT OF  
SCIENCE & TECHNOLOGY**



**అఖిల భారత వైద్య విజ్ఞాన సంస్థ**  
**అఖిల భారతీయ ఆయుర్విజ్ఞాన సంస్థాన, బీబీనగర్**  
**ALL INDIA INSTITUTE OF MEDICAL SCIENCES, BIBINAGAR**  
(Hyderabad Metropolitan Region), Telangana

**Good Health  
and Happiness**



**INTERNATIONAL INSTITUTE OF  
INFORMATION TECHNOLOGY**  
HYDERABAD



**इलाहाबाद विश्वविद्यालय**  
**UNIVERSITY OF ALLAHABAD**  
(A Central University)



**हैदराबाद विश्वविद्यालय**  
**University of Hyderabad**



Scheme for Promotion of Academic and Research Collaboration



**Ministry of Education**  
Government of India



**INDRAPRASTHA INSTITUTE of  
INFORMATION TECHNOLOGY DELHI**



**INSTITUTE FOR  
HUMAN DEVELOPMENT**



**Polavaram Project Authority (PPA)**



MGNCRE

**महात्मा गांधी राष्ट्रीय ग्रामीण शिक्षा परिषद**  
**Mahatma Gandhi National Council of Rural Education**  
Department of Higher Education  
Ministry of Human Resource Development, Government of India







IIMAD THE INTERNATIONAL INSTITUTE OF MIGRATION & DEVELOPMENT



THE UNIVERSITY of EDINBURGH

Winzard Empower · Engage · Enhance



Fiji Government



THE UNIVERSITY OF SYDNEY



UNIVERSITY OF CAMBRIDGE



大阪大学 OSAKA UNIVERSITY



BANK INDONESIA BANK SENTRAL REPUBLIK INDONESIA



Australian National University



UNIVERSITY OF LUCERNE



ශ්‍රී ලංකා මහ බැංකුව இலங்கை மத்திய வங்கி CENTRAL BANK OF SRI LANKA



GOBIERNO DE ESPAÑA

MINISTERIO DE CIENCIA E INNOVACIÓN



CONSEJO SUPERIOR DE INVESTIGACIONES CIENTÍFICAS



SASNET SWEDISH SOUTH ASIAN STUDIES NETWORK





## CONTACT US



office@la.iith.ac.in

head@la.iith.ac.in

---



<https://la.iith.ac.in/>

---



Landline-HoD: 040 2301 6022

---